



TRADITION AND  
INNOVATION SINCE 1954

ALWAYS A STRONG PARTNER

---

 KESSEBÖHMER

---



# INNOVATIVE SOLUTIONS – ACROSS THE GENERATIONS

DESIGN, QUALITY, COMFORT

—————  KESSEBÖHMER —————



**FOR GENERATIONS, THE NAME KESSEBÖHMER HAS STOOD FOR INNOVATIVE SOLUTIONS – A STRONG BLEND OF DESIGN, FUNCTION AND QUALITY.** Today Kesseböhmer remains a successful owner-managed company group.

Our core competence is in metal processing. We work with wire, sheet metal and tubing. Products are finished in our in-house electroplating and powder-coating facilities. Our strong customer orientation has helped us to build and maintain our position as the leading supplier of functional fittings for kitchen units.

Our well-designed products help end-users to keep storage space tidy and check all the contents at a glance. They help to make best use of space and make kitchen work more efficient. These benefits are strong selling points for kitchens. In addition, kitchen manufacturers and kitchen fitters profit from the ultra-easy assembly and adjustment of our pull-outs

and other fittings. More and more of our products use snap-on connections, so that they can be assembled without tools. The result is time savings and quality gains.

From the initial idea to final shipment, every step of the process is in-house – including developing and engineering production machinery and tooling. This is why we're so good at turning innovative ideas into products – quickly and successfully.

**Fascinating functionality. Impressive design. Quality that sets standards.**





# DESIGN AND TECHNOLOGY VARIANTS

## CONTENTS

 KESSEBÖHMER

### Metal baskets, ARENA variants

From classic to contemporary –  
our versatile tray variants



### ARENA plus Anti-slip coating

Welcome to your  
quiet kitchen

### SoftSTOPP, SoftSTOPPplus, SoftSTOPPpro

For gentle braking and  
silent closing



### eTouch

Multifunctional, innovative,  
intuitive and retrofittable

### Synchromatic

The new standard for reliable  
functionality day in, day out



### ClickFixx

For quick and easy assembly

### Quality

We are absolutely committed to  
supplying high quality products. We  
want you to enjoy using them  
throughout their long service lives.







# FROM CLASSIC TO CONTEMPORARY

## OUR VERSATILE TRAY VARIANTS

 KESSEBÖHMER

**PEOPLE CHOOSING A NEW KITCHEN SET A HIGH PRIORITY ON ATTRACTIVE DESIGN – ALSO FOR THE INTERIOR FITTINGS – AS AN IMPORTANT PURCHASE CRITERION.** This means that function and optics should blend in a homogenous whole, the interior fittings must harmonize with the overall kitchen design.

Our design variants ARENA classic, ARENA style and ARENA pure, metal trays/baskets are used in all our larder pull-outs, and in corner and base units. All ARENA variants combine optimal functionality and attractive design with maximum space utilization – thanks to the railing being attached to the outer edge of the tray.

# METAL BASKETS

ROBUST, HIGH-VISIBILITY STORAGE

 KESSEBÖHMER



**KESSEBÖHMER METAL BASKETS STILL COUNT AMONG THE TRUE DESIGN CLASSICS. THEY HAVE TWO BIG ADVANTAGES – THEY'RE ROBUST, AND BASKET CONTENTS ARE CLEARLY VISIBLE.** In-house electroplating or powder coating gives the metal baskets a surface finish that communicates incomparable Kesseböhmer processing quality.



# ARENA classic

CLASSIC DESIGN FOR CONTEMPORARY KITCHENS

 KESSEBÖHMER



**THE FORMS AND MATERIALS OF ARENA CLASSIC TRAYS  
ADD VALUE TO EVERY KITCHEN FROM THE INSIDE OUT.**

The elegant railing is bonded seamlessly with the wood bottom panel and enhances both round and rectangular trays. The railing is attached at the outer edge of the tray so that the entire tray is available for storage and no space is wasted.

# ARENA style

FINE DESIGN AND PERFECT WORKMANSHIP

 KESSEBÖHMER



reddot design award



**THIS CONTEMPORARY DESIGN FEATURES A STREAMLINED RAILING MADE OF METAL BANDS AROUND THE BOTTOM PANEL.** The clear, straight lines harmonize especially well with contemporary kitchens and add value from the inside out. International recognition, for example the red dot design award, underline the outstanding design.



**THE NAME ARENA PURE SAYS IT ALL:** the puristic, self-contained design of the new tray in the ARENA family is the perfect accompaniment to linear and contemporary yet homely kitchen architecture and the trend towards minimalistic frame designs.

The railing height corresponds to that in the ARENA-style tray to create the perfect frame for the storage items. The powder-coated aluminium railing promises effortlessness alongside Kesseböhmer's consistently high standards for load-bearing capacity thanks to the tried-and-tested ARENA adhesive technology between the wooden base and metal railing.

# ARENA plus anti-slip coating

WELCOME TO YOUR  
QUIET KITCHEN

— KESSEBÖHMER —



**KESSEBÖHMER'S SPECIAL ARENAPLUS COATING** prevents pots and pans, crockery and groceries slipping and sliding when a pull-out is opened or a carousel turned.

**ARENA**plus









# SoftSTOPP, SoftSTOPPplus & SoftSTOPPpro

FOR GENTLE BRAKING AND SILENT CLOSING

—  KESSEBÖHMER —



**SoftSTOPP, SoftSTOPplus & SoftSTOPpro  
IS THE BEST COMBINATION AS A HIGH-  
PERFORMANCE DAMPING SYSTEM FOR  
CABINETS DESIGNED TO TAKE HIGH LOADS.**

The SoftSTOPP range harmonizes movement sequences.

SoftSTOPP delivers damped closing.

SoftSTOPplus delivers damped closing plus self-closing.

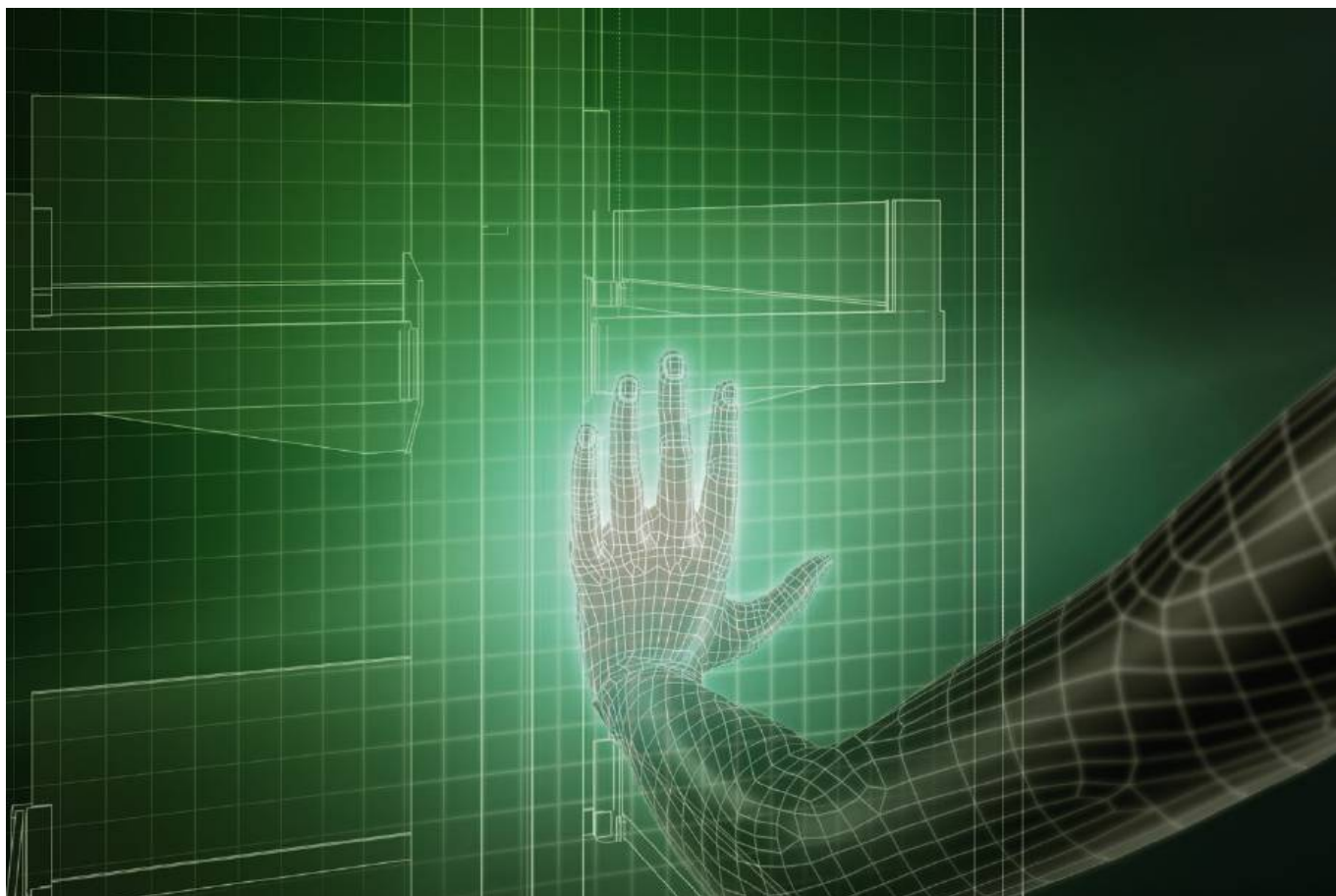
SoftSTOPpro delivers damped opening.











# eTouch

MULTIFUNCTIONAL, INNOVATIVE,  
INTUITIVE AND RETROFITTABLE

 KESSEBÖHMER

**eTouch OPENS UP CUPBOARDS – AND NEW POTENTIAL. IT'S NEVER BEEN SO EASY AND ELEGANT TO OPEN STORAGE UNITS!** Gentle pressure anywhere on the front panel – use your hand or even your elbow or knee – starts the fully automatic opening sequence. In any storage unit – from tall cabinet to wall unit eTouch operates smoothly with the proven Kesseböhmer pull-out and lifter technology. That's why it's also quick and straightforward to retrofit.

In addition to big gains in convenience and user-friendliness, eTouch offers new potential for kitchen planners. No-handle cupboards that open automatically and effortlessly are right in line with the trend for streamlined kitchen designs and smooth runs of kitchen fronts. But above all, eTouch makes kitchen work far easier day in, day out.



# Synchromatic

THE NEW STANDARD FOR RELIABLE FUNCTIONALITY  
DAY IN, DAY OUT

—  KESSEBÖHMER —

**THIS INNOVATIVE SYNCHRONIZATION SYSTEM**

makes sure that the runner segments always automatically line up in “zero” position – regardless of how often and how far the pull-out is opened. This guarantees perfect closing every time.





**Your benefits in brief:**

- More reliable operation and ease-of-use in the kitchen

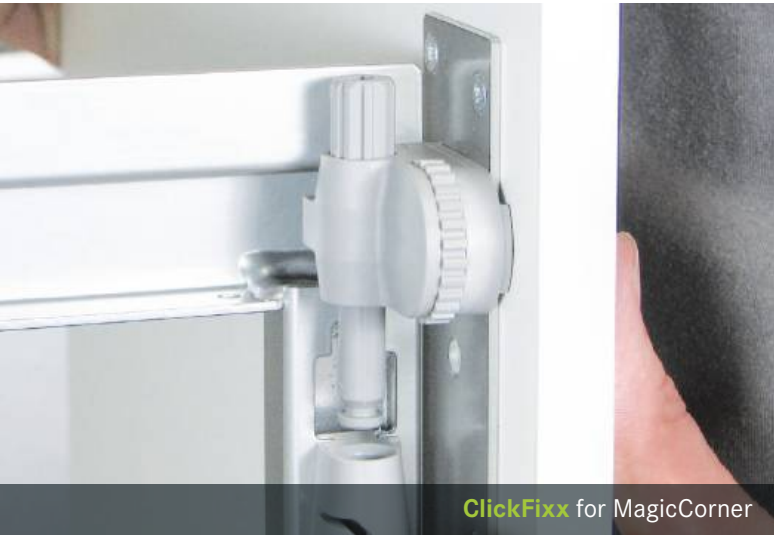




ClickFixx for DISPENSA



ClickFixx for CONVOY



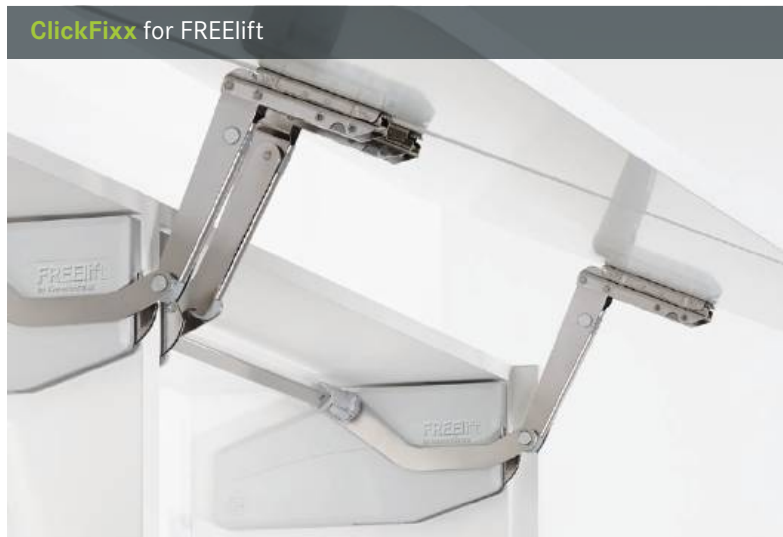
ClickFixx for MagicCorner



ClickFixx for LeMans II



ClickFixx for REVO 90°



ClickFixx for FREElift

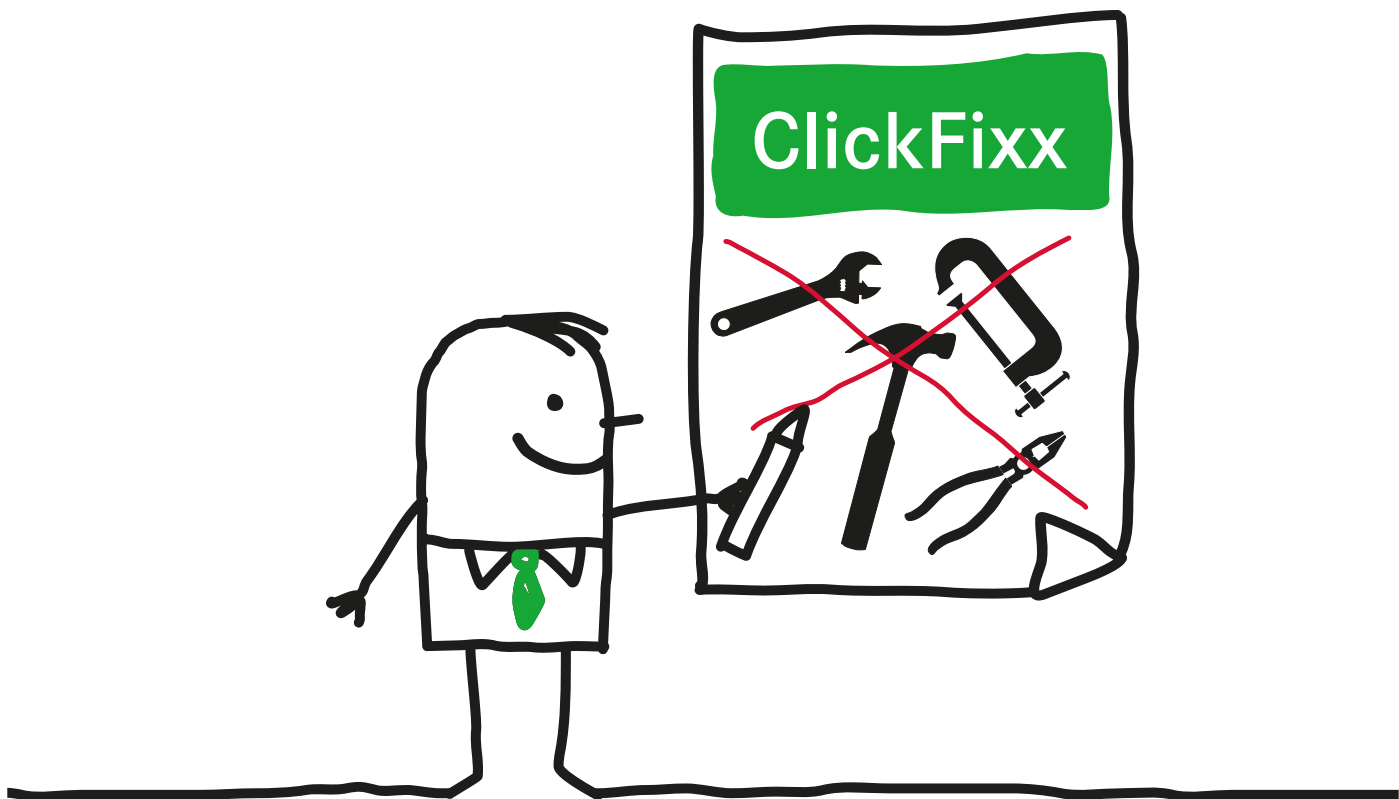


ClickFixx for DISPENSA junior III



ClickFixx for No.15





# ClickFixx

QUICK AND EASY ASSEMBLY

 KESSEBÖHMER

**IT'S SIMPLY FASTER!** The new ClickFixx system for all storage units cuts assembly time and guarantees a high fitting standard. Both the front panel and the support frame connector are clipped on in a fast, toolless process! And then all it takes is a screwdriver for gap adjustment.



**QUALITY**  
**WE ARE ABSOLUTELY COMMITTED**  
**TO SUPPLYING HIGH QUALITY PRODUCTS.**

We want you to enjoy using them throughout their long service lives. This is why we subject them to exhaustive quality, endurance and safety tests. We achieve high and lasting quality through strict quality management with continuous monitoring and testing. The effective forces, tight manufacturing tolerances and movement distances are all sensor checked; the spring forces generated in the fittings are monitored to ensure that the high-precision movement sequences and dimensional accuracy in the adjustment range are maintained within tight tolerances. Only then are we satisfied and sure that our products will deliver what we have promised.

Our manufacturing processes are certified to demonstrate that we can meet product specifications. We set a high priority on durable, high quality materials and on high precision processing during our manufacturing processes. Samples from each batch are subjected to endurance tests. In addition, we use continuous camera-based process monitoring and maintain high occupational safety standards for our employees.

Our R&D engineers use the most advanced technical design aids and develop products that will be manufactured using the latest process technologies. The highest level of user-friendliness and convenience is a very high priority from the start. It's an ongoing challenge for us to combine outstanding engineering with elegant, aesthetically pleasing design. And we're naturally delighted if this symbiosis wins us awards.



